

# EMBER

AT PARKFIVE

FLOOR PLANS



STUDIO





TYPE

# 01

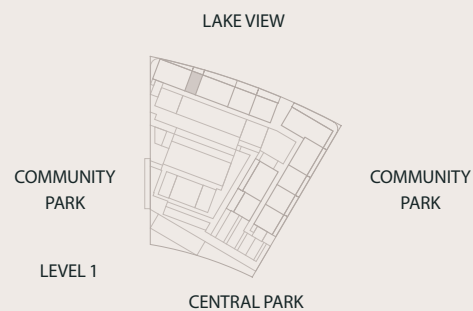
## STUDIO

INTERIOR  
350 SQ.FT.

TOTAL  
433 SQ.FT.

EXTERIOR  
82 SQ.FT.

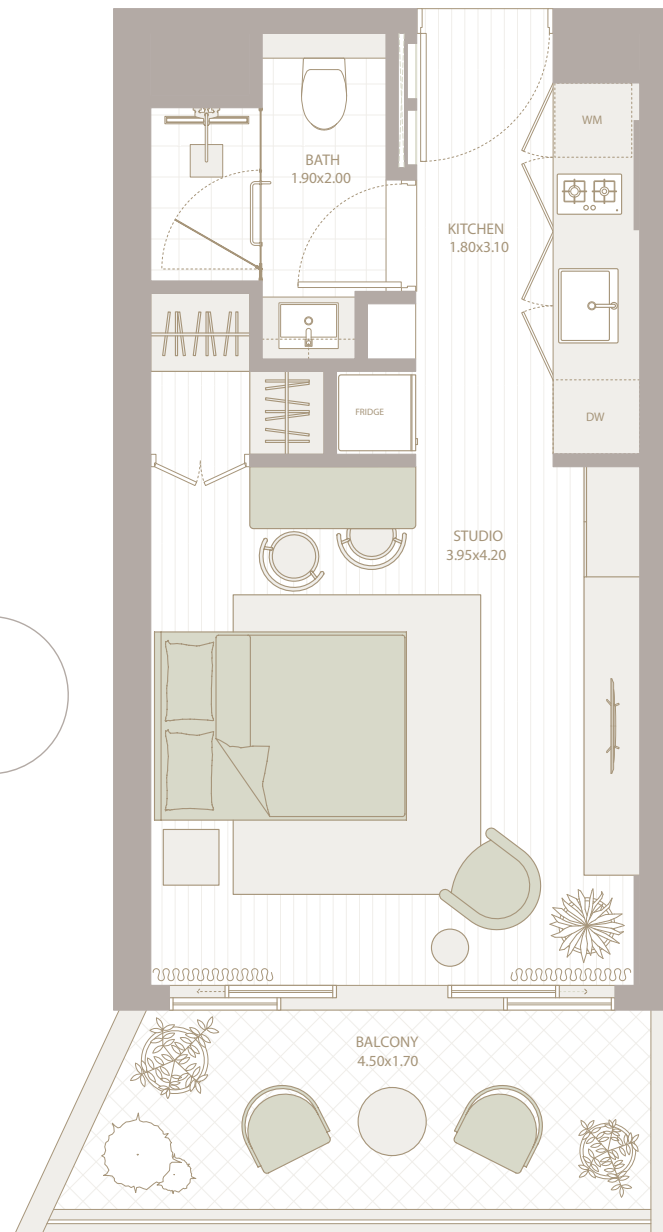
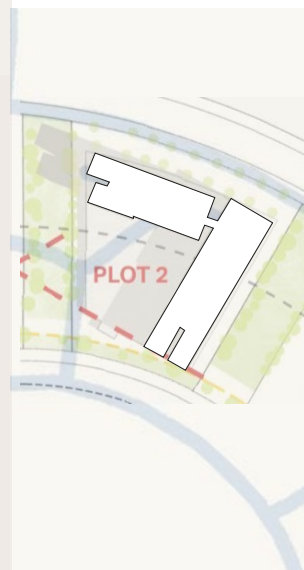
FLOORS  
1-11



LEVEL 1

LEVEL 2-10

LEVEL 11



All the dimensions are in square feet. The Unit shown is typical, and actual Unit may vary in dimensions, areas, layout, material specification, orientation, and location. Some of the Units may have a mirrored layout of the above plan. Unit Windows, Façade, Balcony door location, Fixtures, Kitchen Cabinets, Sanitary ware, and Wardrobes, including each of their location as shown in the plan is indicative and subject to revision by the Seller. All fixtures, fittings, goods, accessories, and furniture reflected/displayed in this plan(s) are strictly illustrative and representational (not actual) in nature and are only for the purpose of illustrating /reflecting one of the possible layouts which the Purchaser could arrange after the Unit is handed over and do not form part of the Unit. No furniture, goods, accessories are included in the sale, unless such items are specifically included in Schedule A of the SPA.

1BEDROOM







TYPE

1A

1 BHK

INTERIOR  
599 SQ.FT.TOTAL  
687 SQ.FT.EXTERIOR  
88 SQ.FT.FLOORS  
2-11

LAKE VIEW

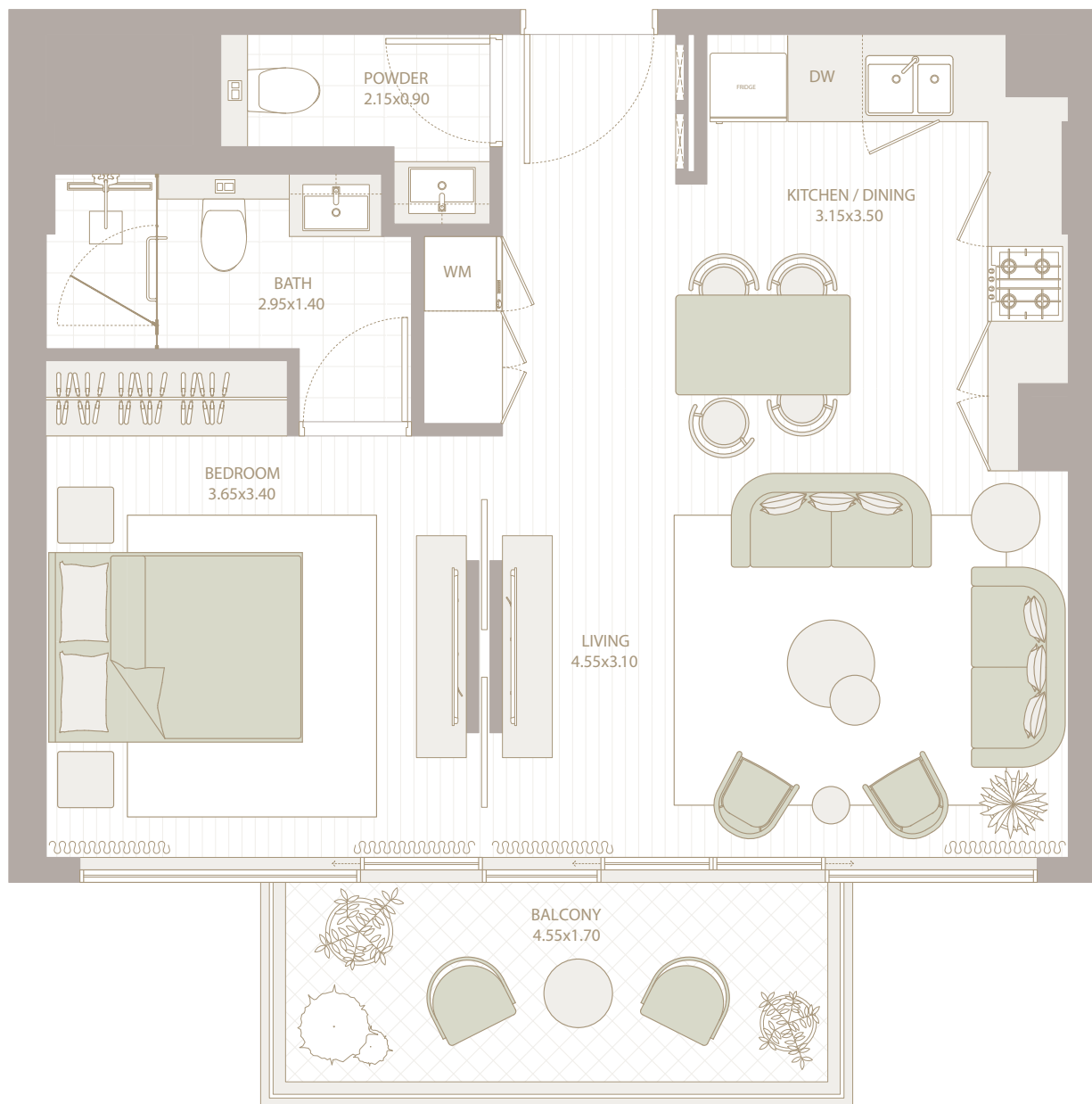
COMMUNITY  
PARK

LEVEL 2-10

CENTRAL PARK

COMMUNITY  
PARK

LEVEL 11



All the dimensions are in square feet. The Unit shown is typical, and actual Unit may vary in dimensions, areas, layout, material specification, orientation, and location. Some of the Units may have a mirrored layout of the above plan. Unit Windows, Façade, Balcony door location, Fixtures, Kitchen Cabinets, Sanitary ware, and Wardrobes, including each of their location as shown in the plan is indicative and subject to revision by the Seller. All fixtures, fittings, goods, accessories, and furniture reflected/displayed in this plan(s) are strictly illustrative and representational (not actual) in nature and are only for the purpose of illustrating /reflecting one of the possible layouts which the Purchaser could arrange after the Unit is handed over and do not form part of the Unit. No furniture, goods, accessories are included in the sale, unless such items are specifically included in Schedule A of the SPA.



TYPE

# 2A

1 BHK

INTERIOR  
700 SQ.FT.

TOTAL  
817 SQ.FT.

EXTERIOR  
118 SQ.FT.

FLOORS  
1-11

LAKE VIEW

COMMUNITY  
PARK

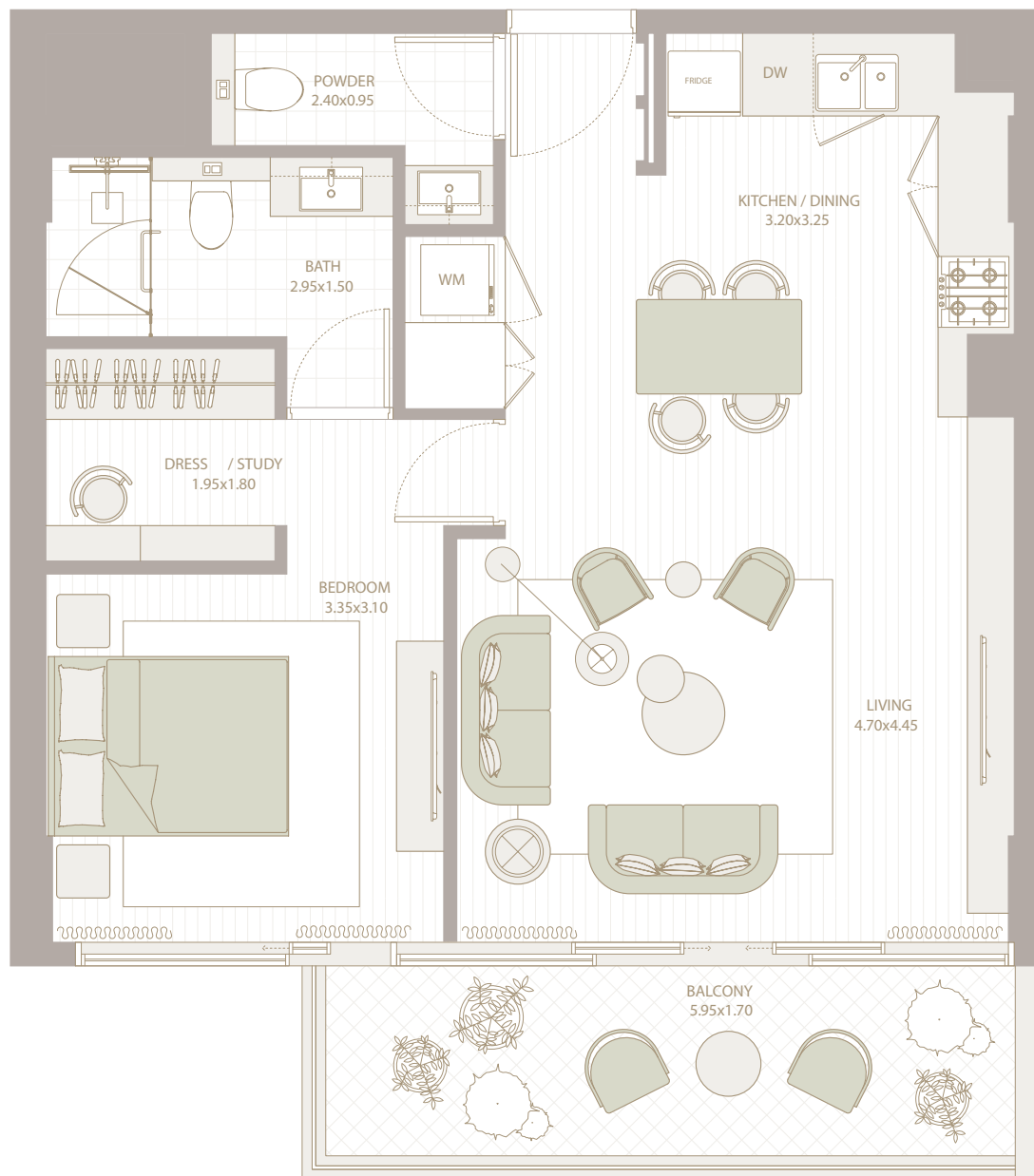
COMMUNITY  
PARK

LEVEL 1

CENTRAL PARK

LEVEL 2-10

LEVEL 11



All the dimensions are in square feet. The Unit shown is typical, and actual Unit may vary in dimensions, areas, layout, material specification, orientation, and location. Some of the Units may have a mirrored layout of the above plan. Unit Windows, Façade, Balcony door location, Fixtures, Kitchen Cabinets, Sanitary ware, and Wardrobes, including each of their location as shown in the plan is indicative and subject to revision by the Seller. All fixtures, fittings, goods, accessories, and furniture reflected/displayed in this plan(s) are strictly illustrative and representational (not actual) in nature and are only for the purpose of illustrating /reflecting one of the possible layouts which the Purchaser could arrange after the Unit is handed over and do not form part of the Unit. No furniture, goods, accessories are included in the sale, unless such items are specifically included in Schedule A of the SPA.

2BEDROOM





TYPE

1B

2 BHK

INTERIOR

1,061 SQ.FT.

TOTAL

1,214 SQ.FT.

EXTERIOR

153 SQ.FT.

FLOORS

2-11

LAKE VIEW

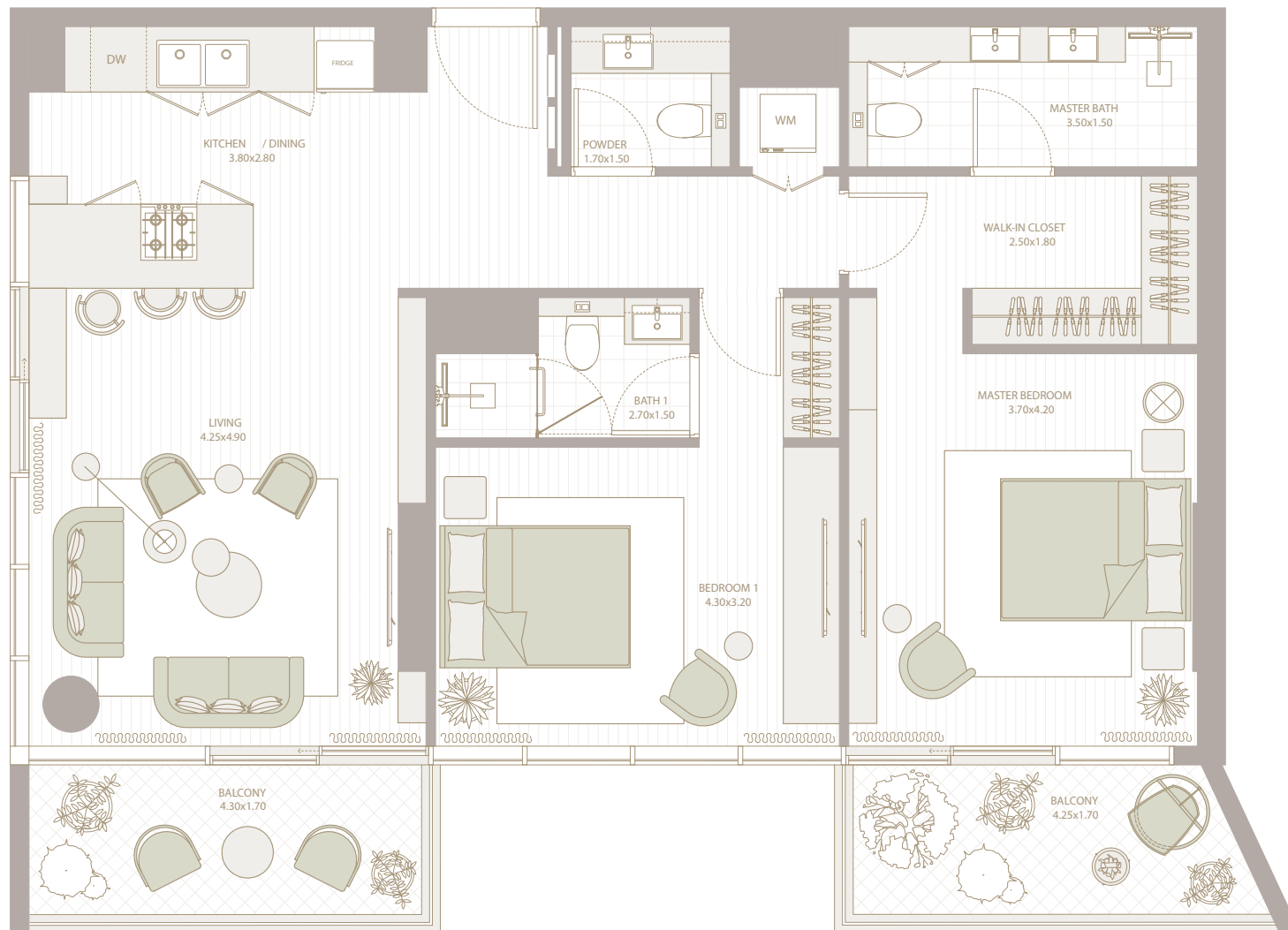
COMMUNITY  
PARK

LEVEL 2-10

CENTRAL PARK

COMMUNITY  
PARK

LEVEL 11



All the dimensions are in square feet. The Unit shown is typical, and actual Unit may vary in dimensions, areas, layout, material specification, orientation, and location. Some of the Units may have a mirrored layout of the above plan. Unit Windows, Façade, Balcony door location, Fixtures, Kitchen Cabinets, Sanitary ware, and Wardrobes, including each of their location as shown in the plan is indicative and subject to revision by the Seller. All fixtures, fittings, goods, accessories, and furniture reflected/displayed in this plan(s) are strictly illustrative and representational (not actual) in nature and are only for the purpose of illustrating /reflecting one of the possible layouts which the Purchaser could arrange after the Unit is handed over and do not form part of the Unit. No furniture, goods, accessories are included in the sale, unless such items are specifically included in Schedule A of the SPA.



TYPE

# 1C

2 BHK

INTERIOR  
1,060 SQ.FT.

TOTAL  
1,228 SQ.FT.

EXTERIOR  
168 SQ.FT.

FLOORS  
2-11

LAKE VIEW

COMMUNITY  
PARK

LEVEL 2-10

CENTRAL PARK

COMMUNITY  
PARK

LEVEL 11



All the dimensions are in square feet. The Unit shown is typical, and actual Unit may vary in dimensions, areas, layout, material specification, orientation, and location. Some of the Units may have a mirrored layout of the above plan. Unit Windows, Façade, Balcony door location, Fixtures, Kitchen Cabinets, Sanitary ware, and Wardrobes, including each of their location as shown in the plan is indicative and subject to revision by the Seller. All fixtures, fittings, goods, accessories, and furniture reflected/displayed in this plan(s) are strictly illustrative and representational (not actual) in nature and are only for the purpose of illustrating /reflecting one of the possible layouts which the Purchaser could arrange after the Unit is handed over and do not form part of the Unit. No furniture, goods, accessories are included in the sale, unless such items are specifically included in Schedule A of the SPA.



TYPE

2A

2 BHK

INTERIOR  
1,050 SQ.FT.

TOTAL  
1,221 SQ.FT.

EXTERIOR  
171 SQ.FT.

FLOORS  
2-11

LAKE VIEW

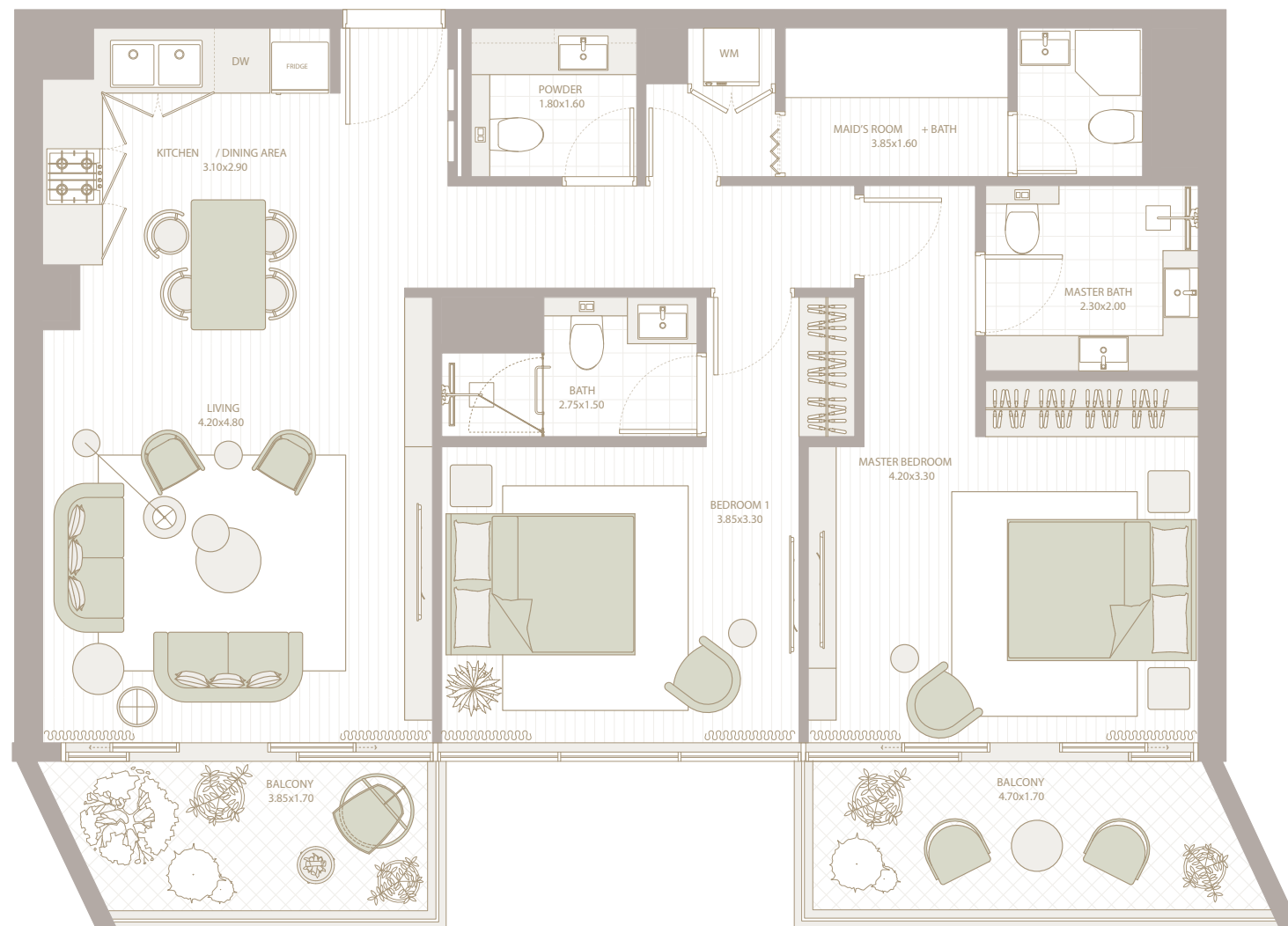
COMMUNITY  
PARK

LEVEL 2-10

CENTRAL PARK

COMMUNITY  
PARK

LEVEL 11



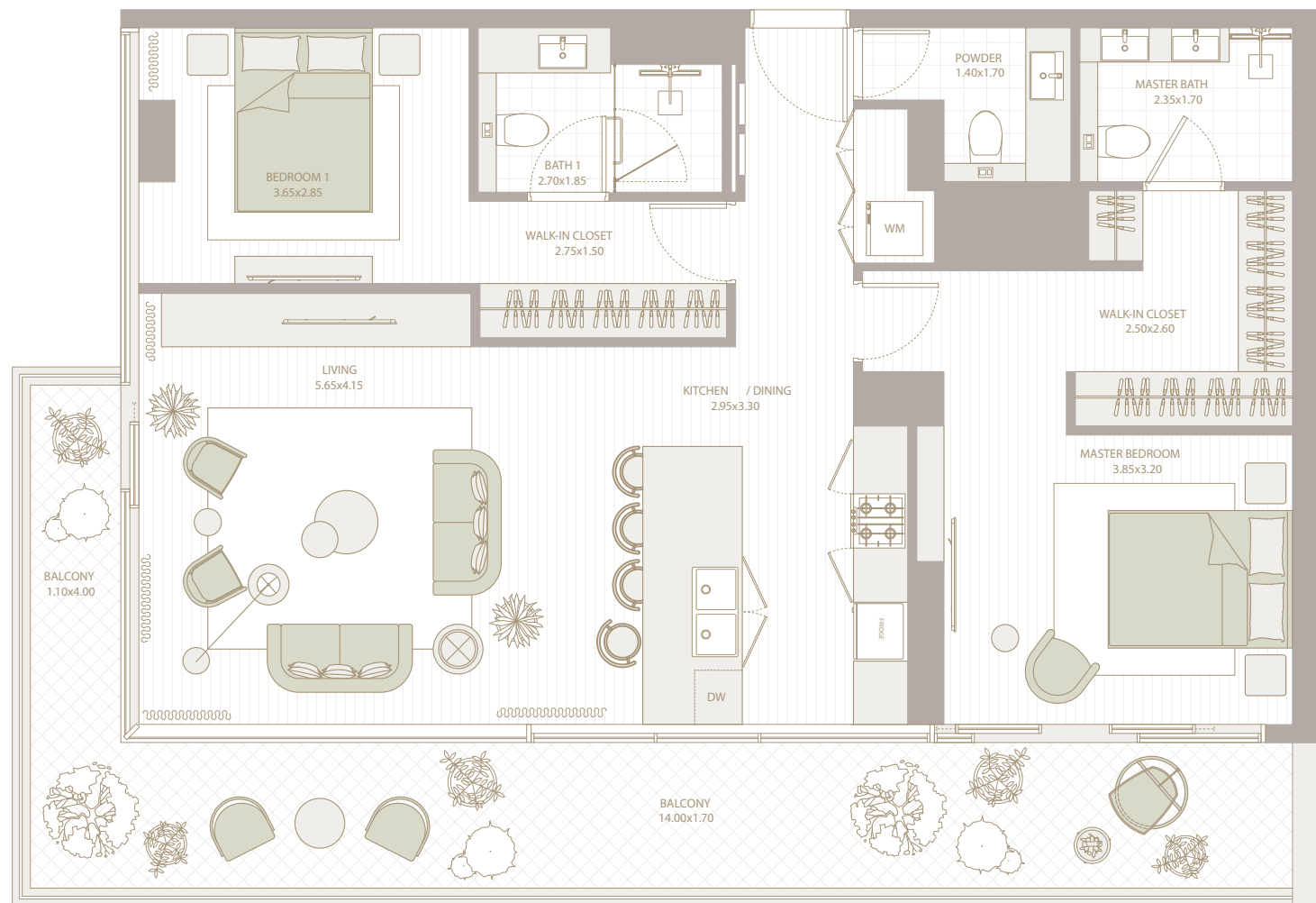
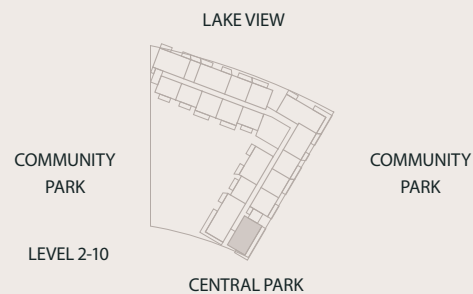
All the dimensions are in square feet. The Unit shown is typical, and actual Unit may vary in dimensions, areas, layout, material specification, orientation, and location. Some of the Units may have a mirrored layout of the above plan. Unit Windows, Façade, Balcony door location, Fixtures, Kitchen Cabinets, Sanitary ware, and Wardrobes, including each of their location as shown in the plan is indicative and subject to revision by the Seller. All fixtures, fittings, goods, accessories, and furniture reflected/displayed in this plan(s) are strictly illustrative and representational (not actual) in nature and are only for the purpose of illustrating /reflecting one of the possible layouts which the Purchaser could arrange after the Unit is handed over and do not form part of the Unit. No furniture, goods, accessories are included in the sale, unless such items are specifically included in Schedule A of the SPA.



TYPE

05

2 BHK

INTERIOR  
1,101 SQ.FT.TOTAL  
1,425 SQ.FT.EXTERIOR  
324 SQ.FT.FLOORS  
2-10

All the dimensions are in square feet. The Unit shown is typical, and actual Unit may vary in dimensions, areas, layout, material specification, orientation, and location. Some of the Units may have a mirrored layout of the above plan. Unit Windows, Façade, Balcony door location, Fixtures, Kitchen Cabinets, Sanitary ware, and Wardrobes, including each of their location as shown in the plan is indicative and subject to revision by the Seller. All fixtures, fittings, goods, accessories, and furniture reflected/displayed in this plan(s) are strictly illustrative and representational (not actual) in nature and are only for the purpose of illustrating /reflecting one of the possible layouts which the Purchaser could arrange after the Unit is handed over and do not form part of the Unit. No furniture, goods, accessories are included in the sale, unless such items are specifically included in Schedule A of the SPA.



TYPE

06

2 BHK

INTERIOR  
994 SQ.FT.

TOTAL  
1,153 SQ.FT.

EXTERIOR  
158 SQ.FT.

FLOORS  
1-11

LAKE VIEW

COMMUNITY  
PARK

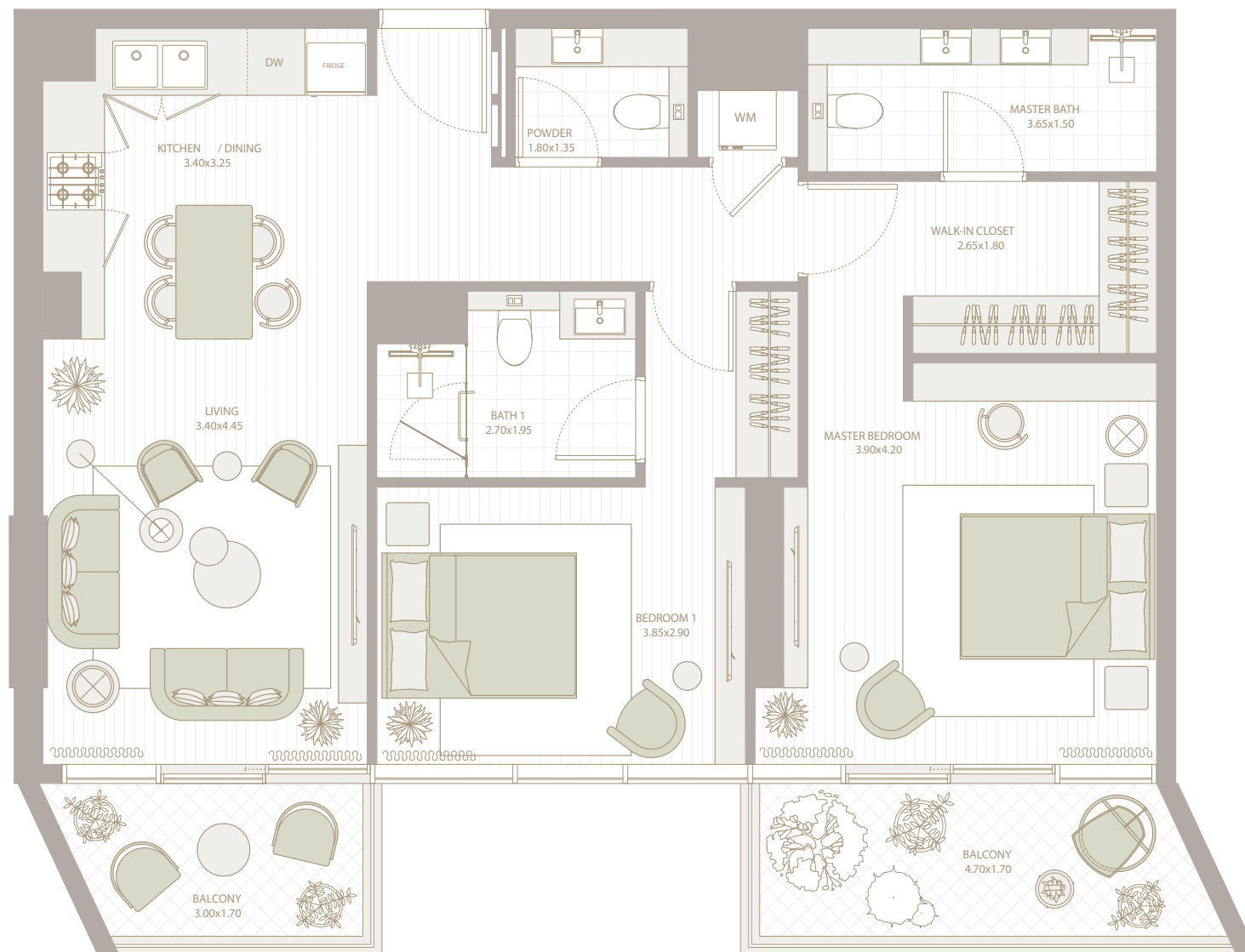
LEVEL 1

CENTRAL PARK

COMMUNITY  
PARK

LEVEL 2-10

LEVEL 11



All the dimensions are in square feet. The Unit shown is typical, and actual Unit may vary in dimensions, areas, layout, material specification, orientation, and location. Some of the Units may have a mirrored layout of the above plan. Unit Windows, Façade, Balcony door location, Fixtures, Kitchen Cabinets, Sanitary ware, and Wardrobes, including each of their location as shown in the plan is indicative and subject to revision by the Seller. All fixtures, fittings, goods, accessories, and furniture reflected/displayed in this plan(s) are strictly illustrative and representational (not actual) in nature and are only for the purpose of illustrating /reflecting one of the possible layouts which the Purchaser could arrange after the Unit is handed over and do not form part of the Unit. No furniture, goods, accessories are included in the sale, unless such items are specifically included in Schedule A of the SPA.



3BEDROOM





TYPE

01

3 BHK

INTERIOR

1,443 SQ.FT.

TOTAL

1,827 SQ.FT.

EXTERIOR

384 SQ.FT.

FLOORS

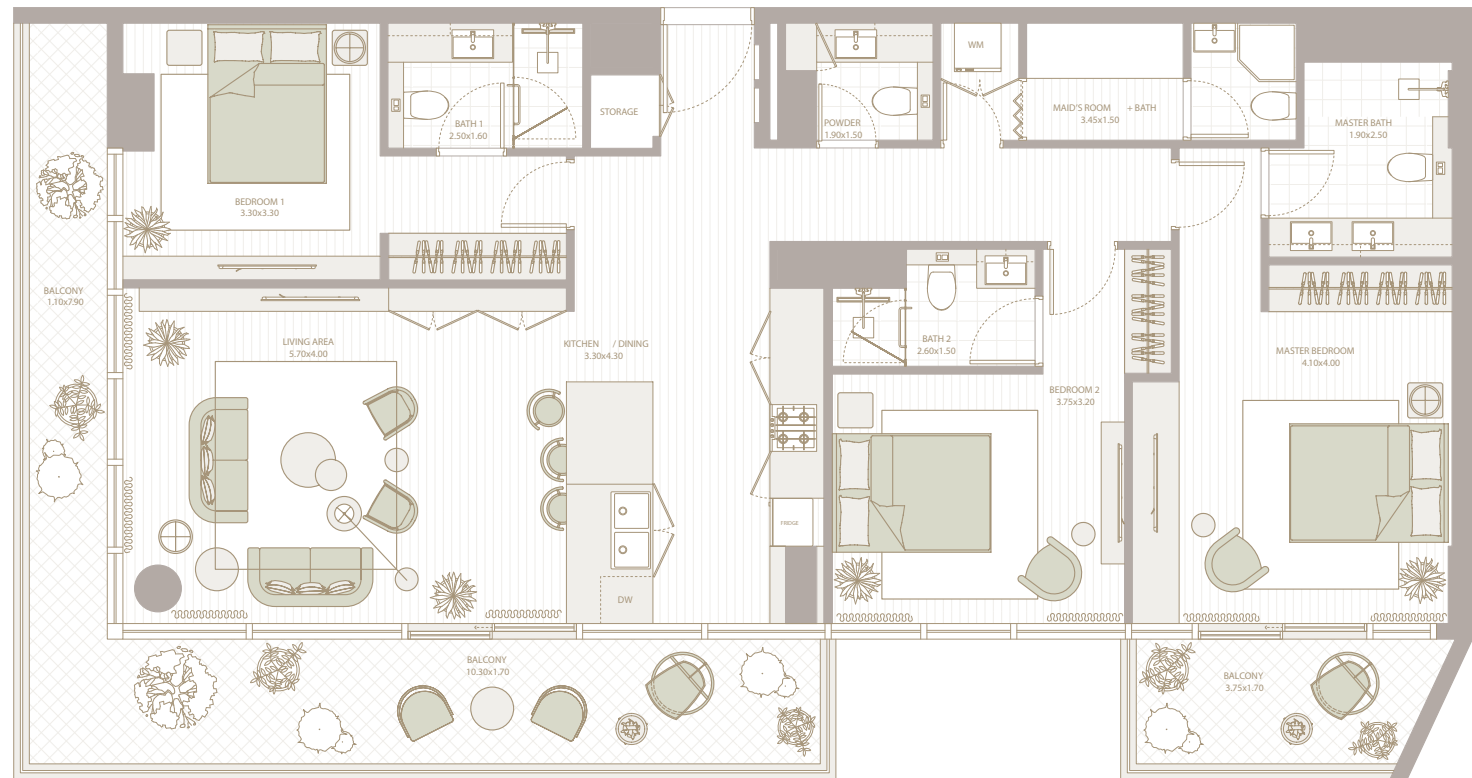
2-10

LAKE VIEW

COMMUNITY  
PARK

LEVEL 2-10

CENTRAL PARK

COMMUNITY  
PARK

All the dimensions are in square feet. The Unit shown is typical, and actual Unit may vary in dimensions, areas, layout, material specification, orientation, and location. Some of the Units may have a mirrored layout of the above plan. Unit Windows, Façade, Balcony door location, Fixtures, Kitchen Cabinets, Sanitary ware, and Wardrobes, including each of their location as shown in the plan is indicative and subject to revision by the Seller. All fixtures, fittings, goods, accessories, and furniture reflected/displayed in this plan(s) are strictly illustrative and representational (not actual) in nature and are only for the purpose of illustrating /reflecting one of the possible layouts which the Purchaser could arrange after the Unit is handed over and do not form part of the Unit. No furniture, goods, accessories are included in the sale, unless such items are specifically included in Schedule A of the SPA.



TYPE

02

3 BHK

INTERIOR

1,411 SQ.FT.

TOTAL

1,777 SQ.FT.

EXTERIOR

366 SQ.FT.

FLOORS

2-11

LAKE VIEW

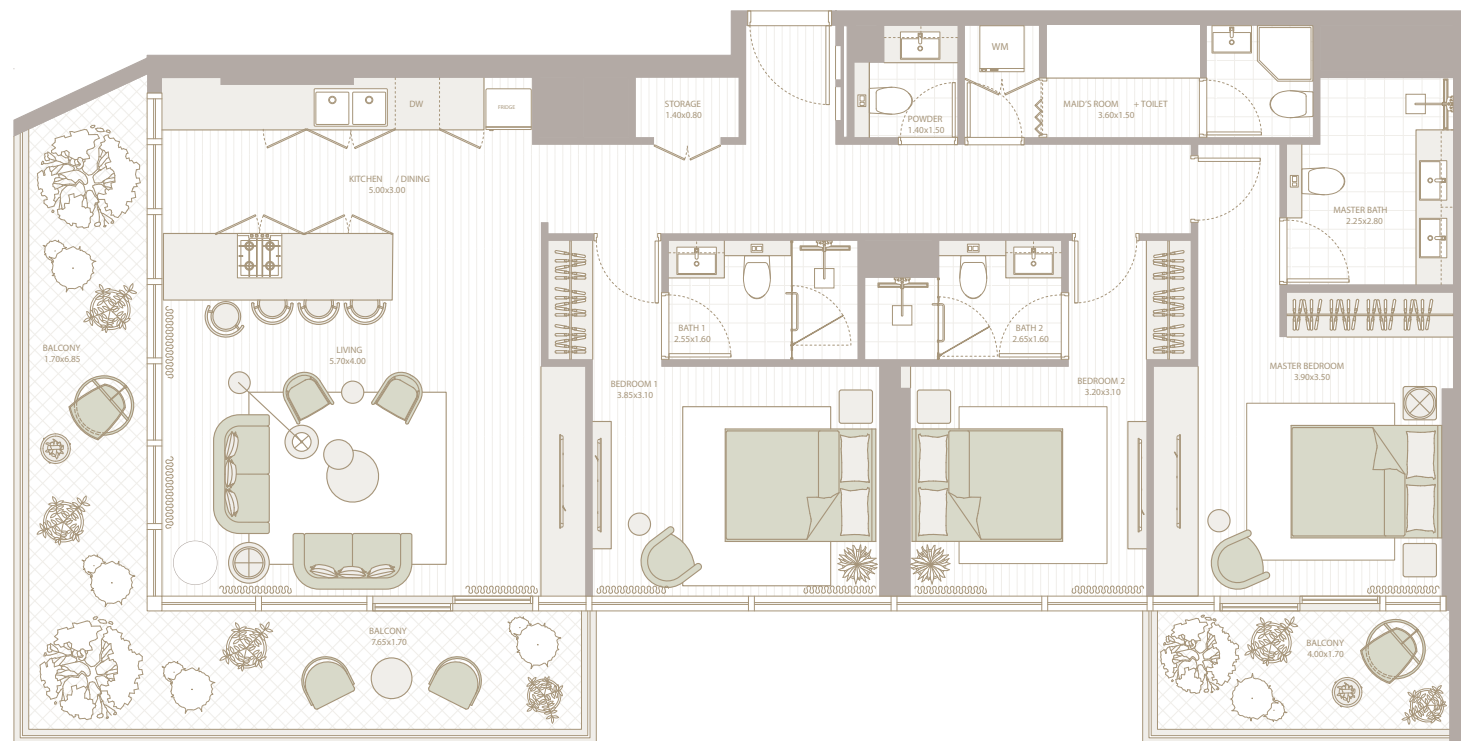
COMMUNITY  
PARK

LEVEL 2-10

CENTRAL PARK

COMMUNITY  
PARK

LEVEL 11



All the dimensions are in square feet. The Unit shown is typical, and actual Unit may vary in dimensions, areas, layout, material specification, orientation, and location. Some of the Units may have a mirrored layout of the above plan. Unit Windows, Façade, Balcony door location, Fixtures, Kitchen Cabinets, Sanitary ware, and Wardrobes, including each of their location as shown in the plan is indicative and subject to revision by the Seller. All fixtures, fittings, goods, accessories, and furniture reflected/displayed in this plan(s) are strictly illustrative and representational (not actual) in nature and are only for the purpose of illustrating /reflecting one of the possible layouts which the Purchaser could arrange after the Unit is handed over and do not form part of the Unit. No furniture, goods, accessories are included in the sale, unless such items are specifically included in Schedule A of the SPA.

# EMBER

AT PARKFIVE

FLOOR PLANS

FOR MORE INFORMATION PLEASE CONTACT



**REAL ESTATE**

STAY AHEAD, INVEST SMART

📞 +971 55 476 7630  
☎ +971 4 368 7878  
✉ info@afsrealestate.com  
🌐 www.afsrealestate.com



**DUBRICKS**

POSSIBILITIES ARE LIMITLESS

📞 +971 50 674 2020  
☎ +971 4 368 7878  
✉ info@dubricks.com  
🌐 www.dubricks.com

